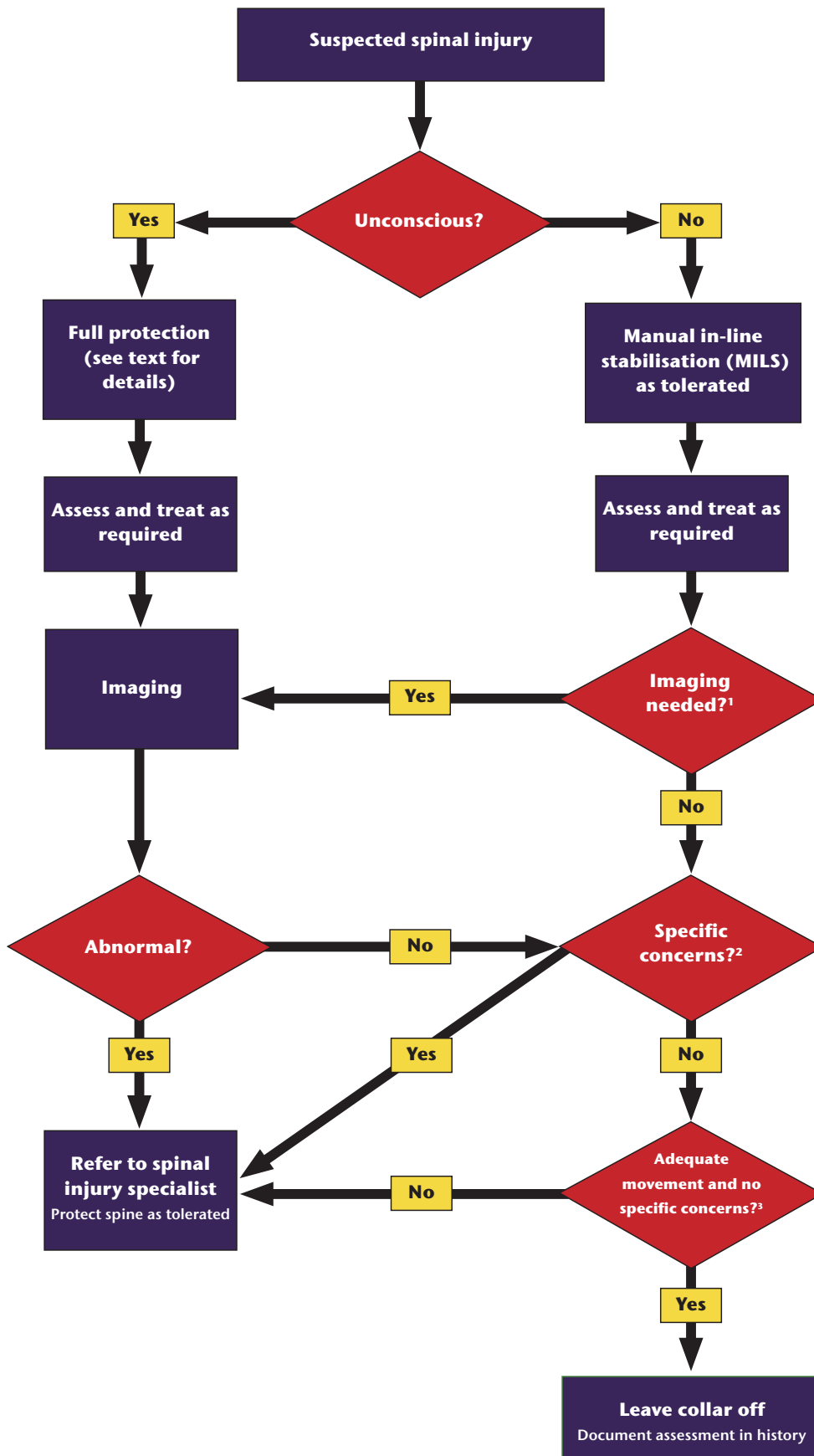


# Spinal imaging, referral and clearance



**¹ Spinal imaging required if YES to any of the following:**  
 Posterior midline spinal tenderness  
 Focal neurological deficit or pain  
 Sedative drugs  
 Painful distracting injury  
 Reduced mental state

**² Check for:**  
 Focal pain or tenderness  
 Abnormal or uncertain imaging (if imaging carried out)  
 Drowsy or uncooperative or unable to assess

**³ Assess:**  
 For rotation 45° to left and right  
 Controls head appropriately, tolerates rotation of trunk and bears weight when vertical